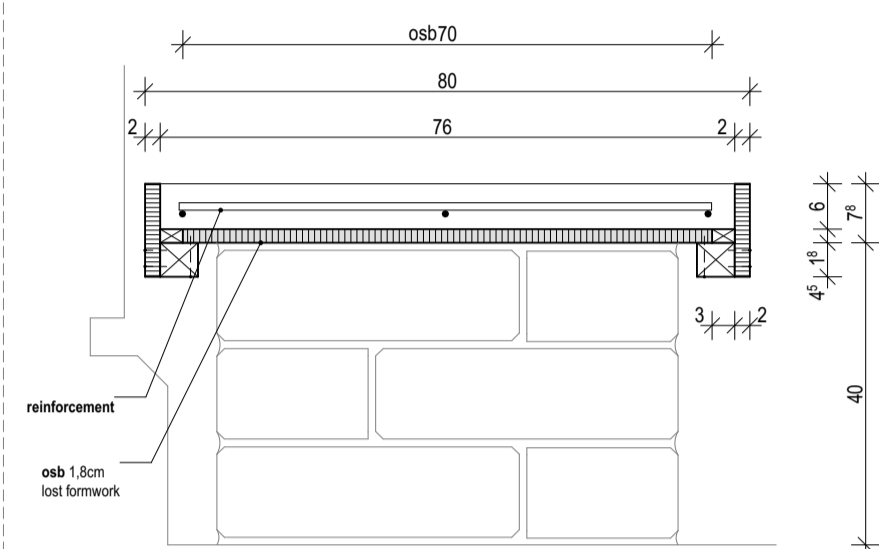


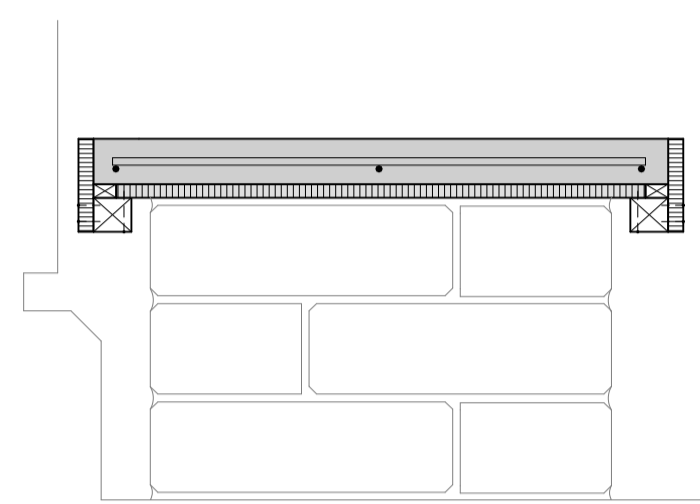
# KITCHEN LOWER COUNTER | FORMWORK

1. cut formwork out of old formwork-pieces of base aula/kitchen
2. support with frames from underneath
3. fix formwork on concrete bricks  
-> osb on top of the bricks = lost formwork!!
4. add frame around
5. cut and add steel reinforcements
6. silicone sealing in the edges
7. oil formwork



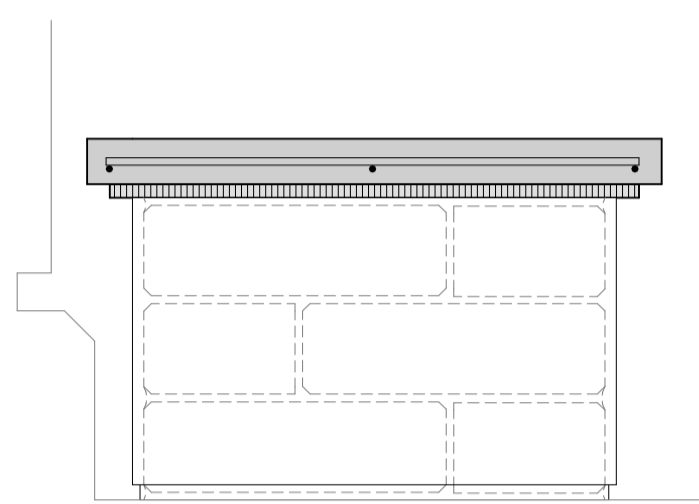
1

8. concrete (height = 6cm)
9. shake the sides of the form so that the air bubbles come out.  
Option: hammer from underneath against the form.
10. smooth the surface with a ladle and break the edges with a ladle



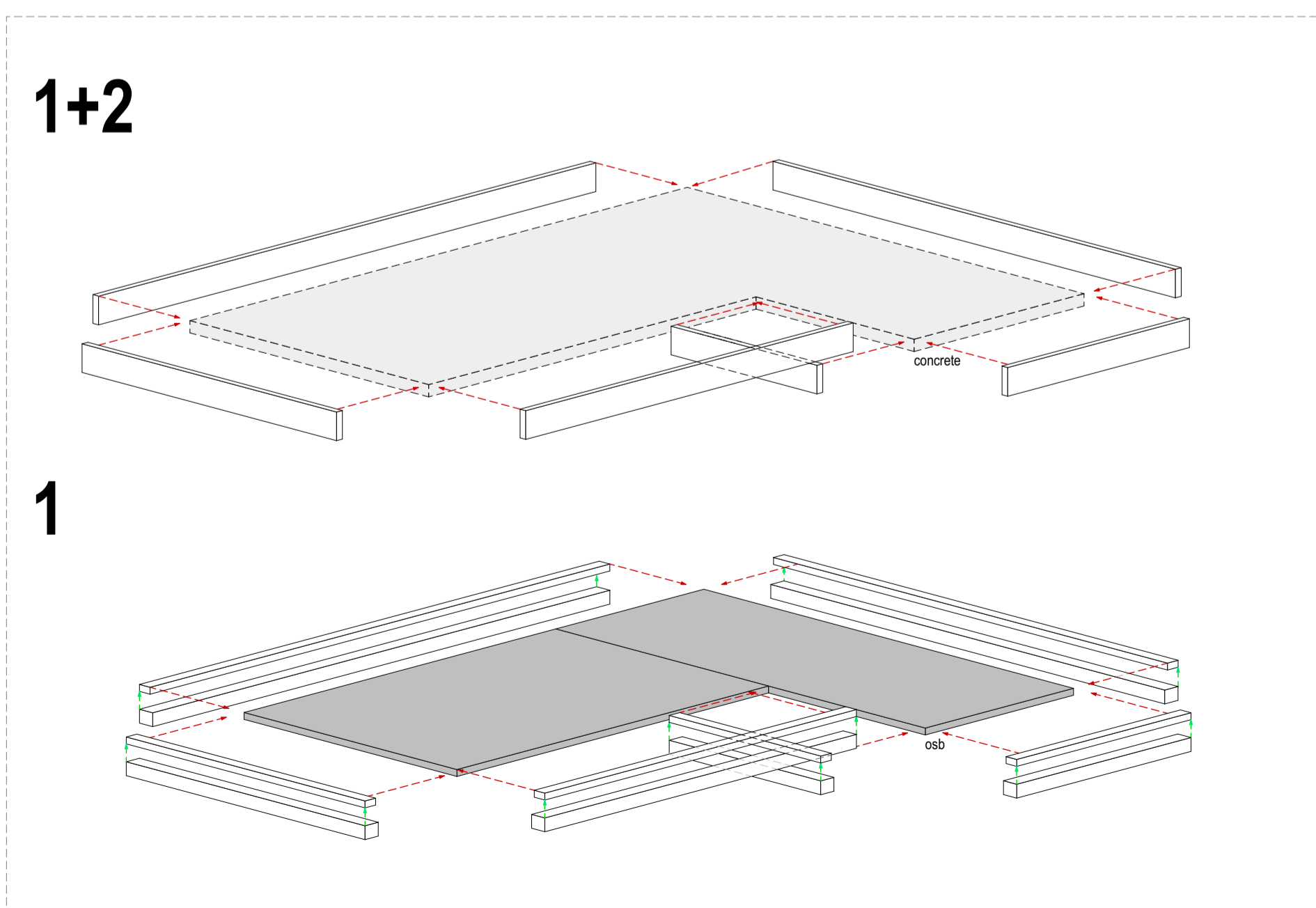
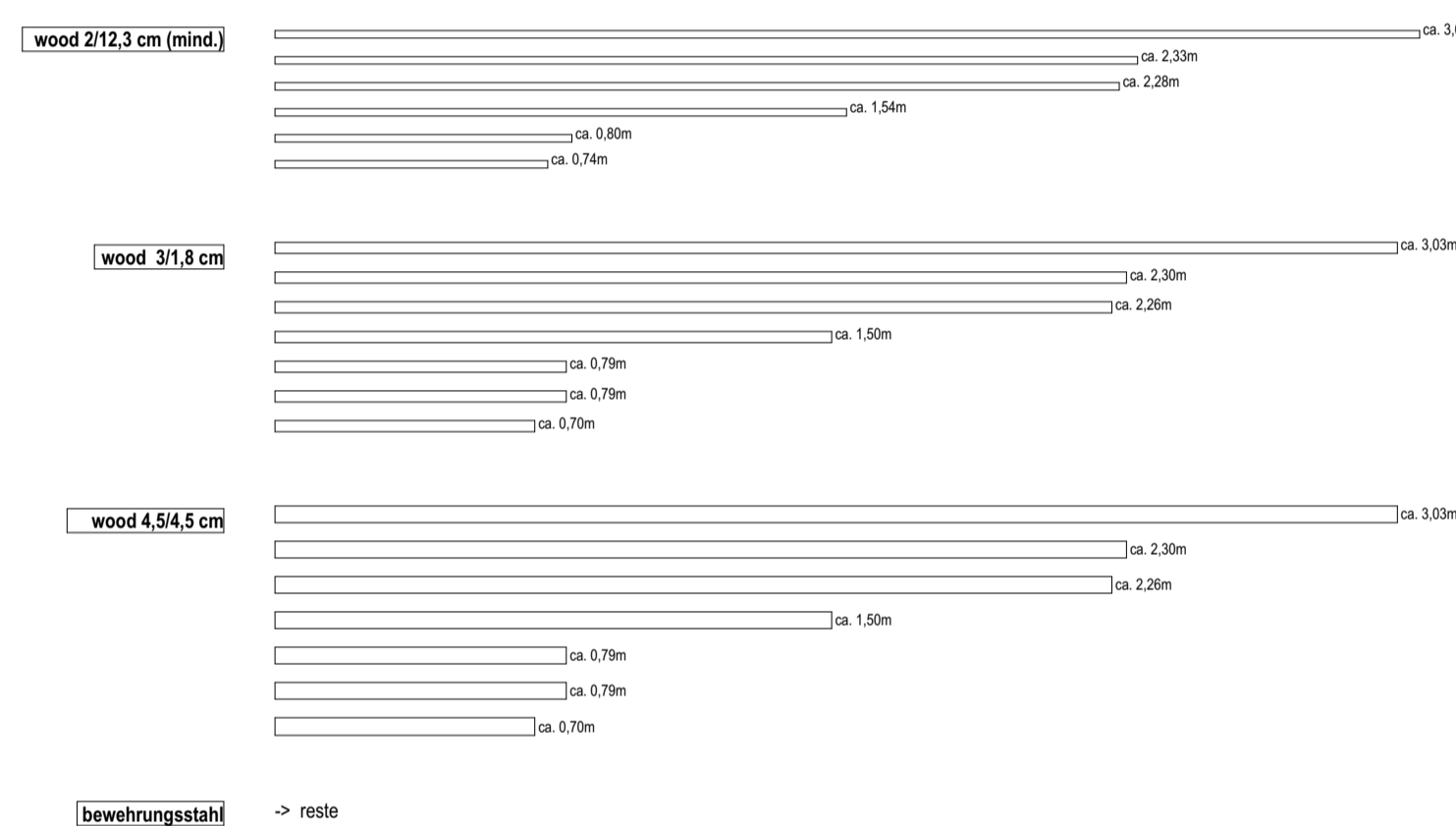
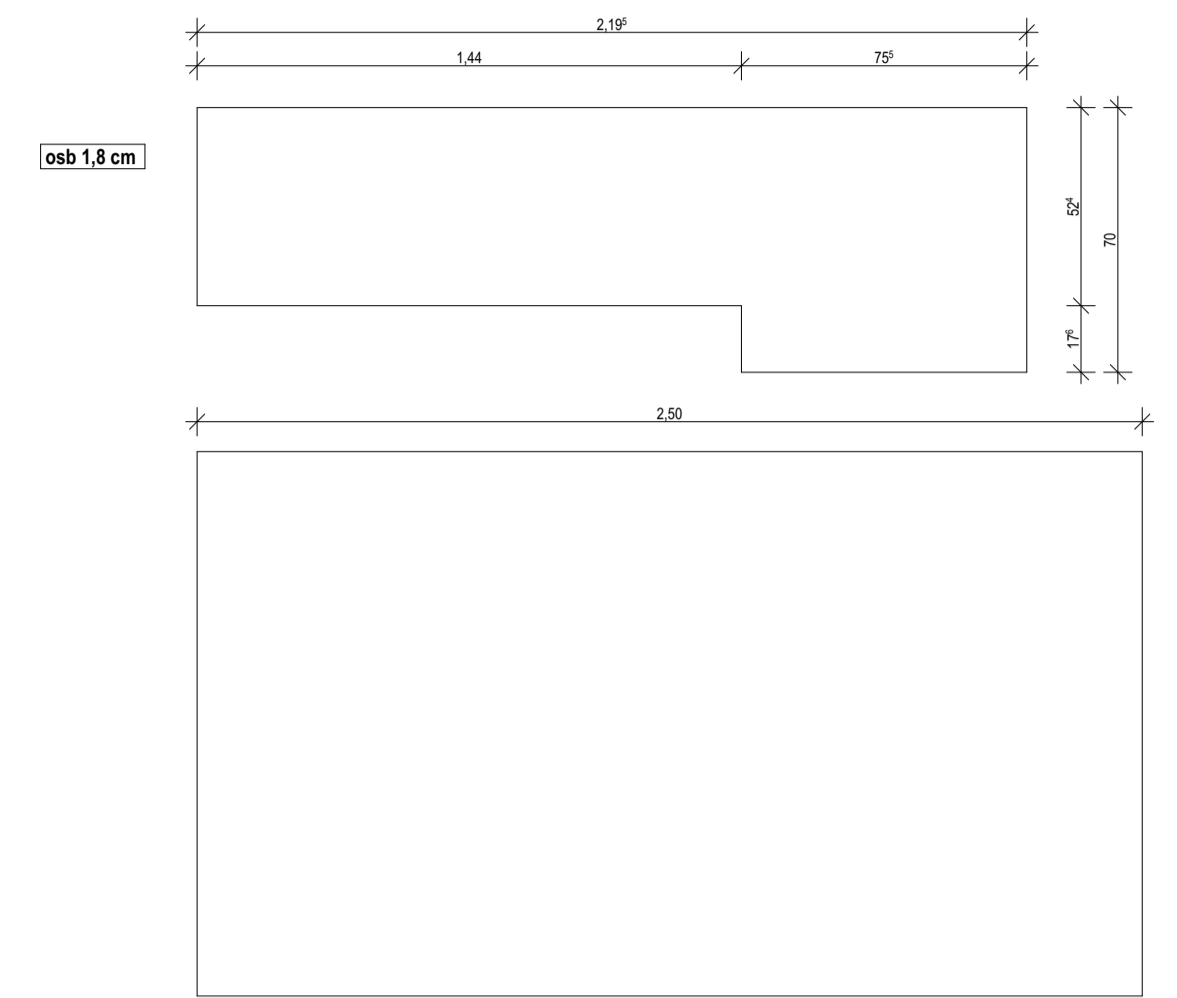
2

11. harden concrete
12. remove the formwork and brush the concrete with a wet concrete brush to smoothen the surface
13. clean dry concrete with water
14. sand down until the top is smooth and remove the dust
15. wax and polish the top with a natural wax or oil
16. plaster bricks 1.5cm! ATTENTION: the visible gap at the bottom

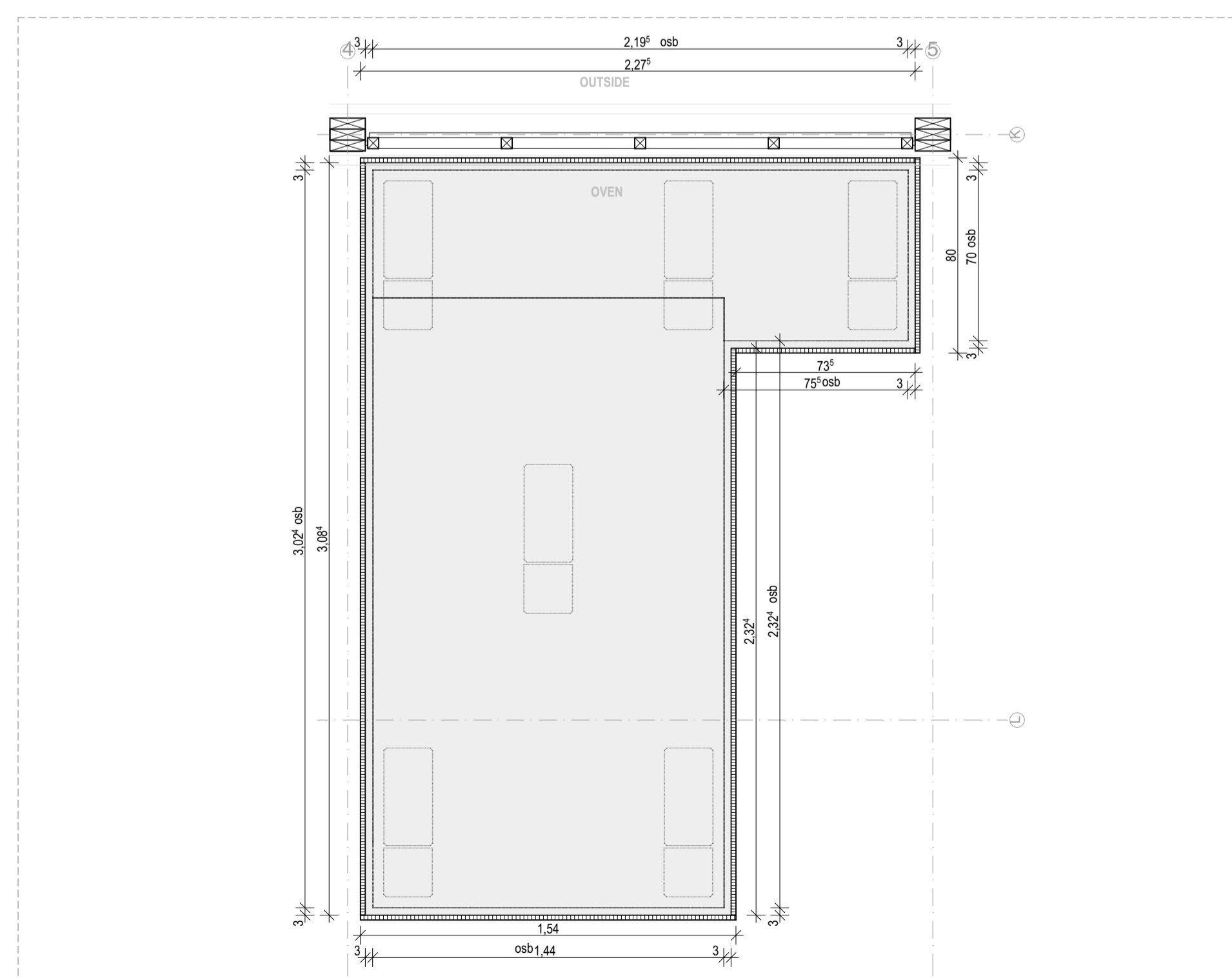


3

SECTIONS BUILDING STEPS | M 1:10



ISO FORMWORK CONSTRUCTION | M 1:20



GROUNDPLAN | M 1:20

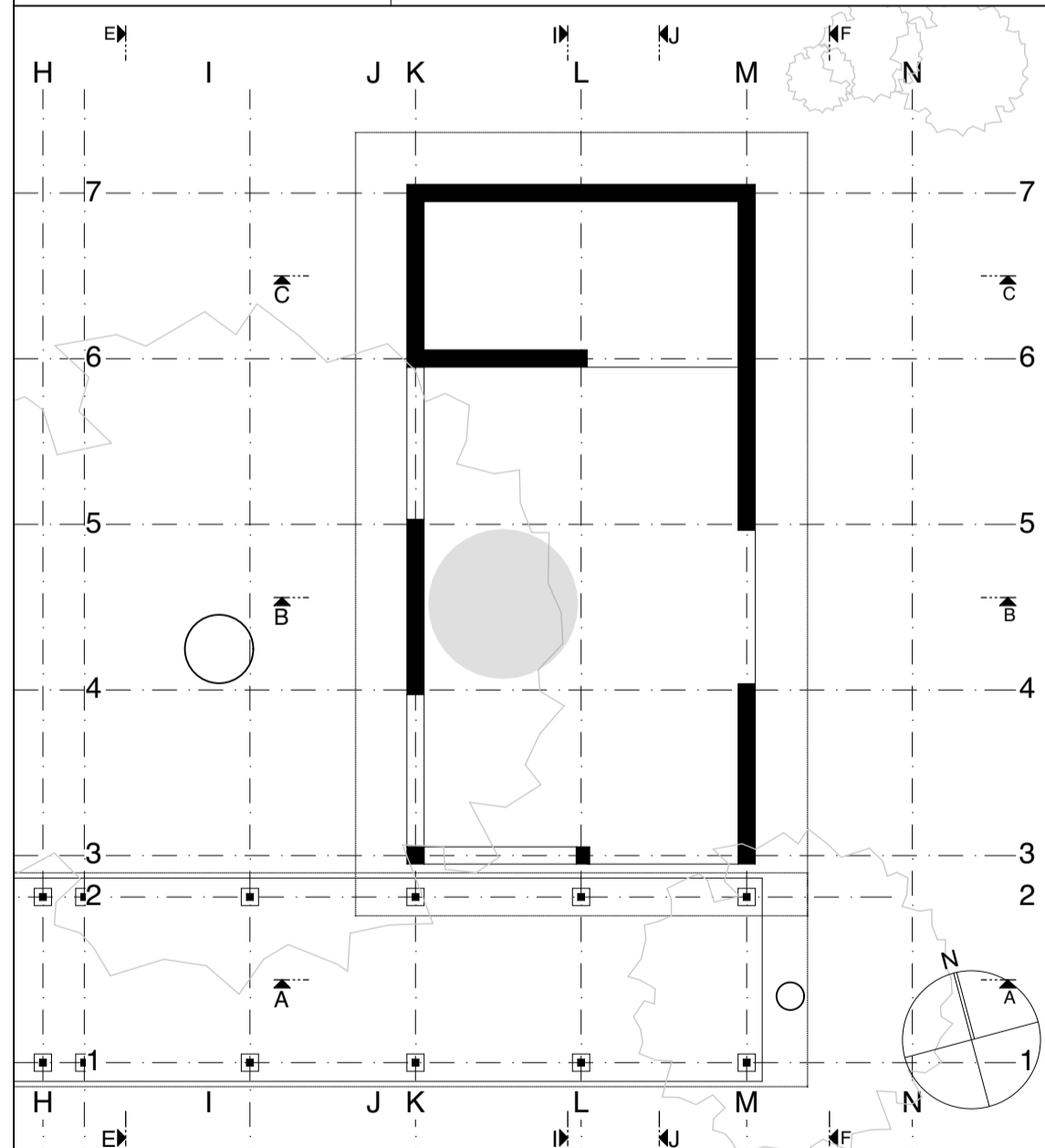
Material	Beschreibung	shortcuts:
Stahlbeton	Höhenlage	OKG Geländeoberkante
Ziegel	OKR OK Rohkonstruktion	FU Fundament
Lehmstein	UKR UK Rohkonstruktion	SO Sockel
Bahareque	OKF OK Fertigkonstruktion	RB Ringbalken
Stahl	UKF UK Fertigkonstruktion	RD Rohdecke
Holz	Grundstücksgrenze	RB Rohboden
Estrich	Achsen	UZ Unterzug
Kies	Schnittlinie	ÜZ Überzug
Erdreich	Planverweis	OK Oberkante
		UK Unterkante
		VK Vorderkante
		RH Raumhöhe (brutto)
		LH lichte Höhe (netto)
		LB lichte Breite (netto)
		FFB Fertigfußboden
		BRH Brüstungshöhe ab OKFFB
		STUK Sturz-UK ab OKFFB
		DF Dehnungsfuge
		RR Regenrohr/Fallrohr
		DN Durchmesser (in mm)

All measurements/dimensions to check on site!

notes:

reference plans:

614\_K\_dt-I  
411\_K\_gr  
lower counter  
kitchen lower ground floor



content: Kitchen \_ Formwork Lower Counter

plan nr.: 615\_K\_dt\_I

drawn by: JS date: 24.01.20 scale: 1:20, 1:10  
sheet size: A1

project: **Centro de Cultura y Ecologia**  
Santa Catarina, Quiané, México  
client: Santa Catarina  
Quiané, México  
author:

new construction of a cultural centre  
second building phase  
Hochschule München  
Master Studio  
DesignBuild Quiané II  
Karlst. 6, 80333 München